



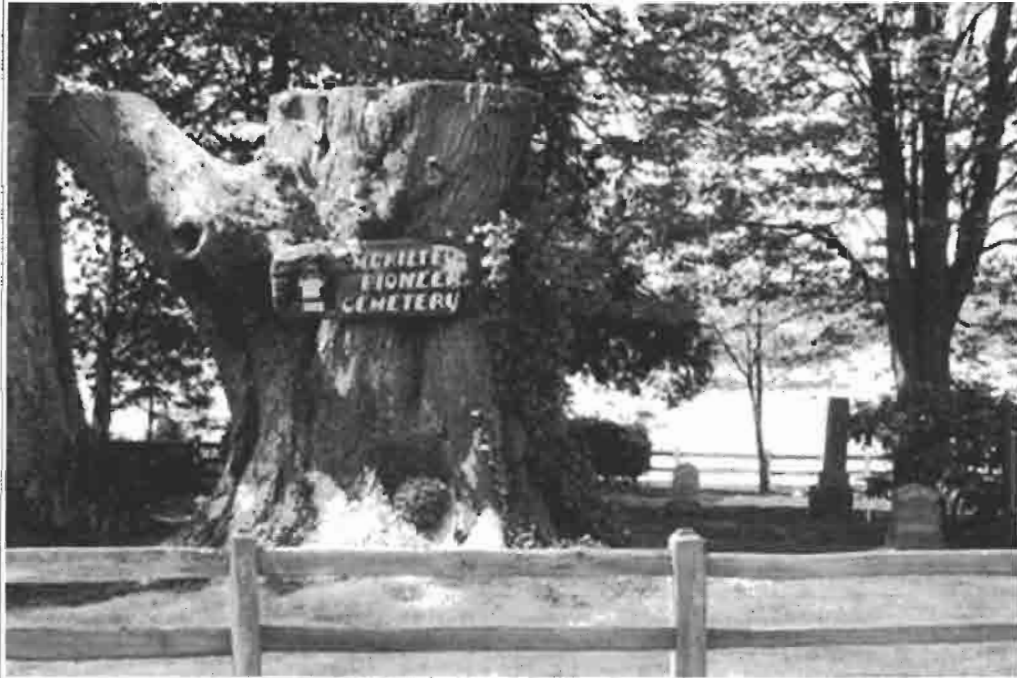
## Resurrection of the Mukilteo Pioneer Cemetery

by Margaret Robe Summitt

(Originally published in the Sounder quarterly of the Sno-Isle Genealogical Society, vol .24 issue 2)

The first known burial in Mukilteo, of Capt. Nathaniel B. Fowler, was made in 1873 on the property of Morris H. Frost. Frost, who was then still living, may have at that time informally designated this part of his property as a cemetery. However, he later fell into debt and much of his original property went into receivership. Louis Kossuth Church and his wife Emma must have purchased this land around 1890, either from Frost or whoever the receiver was. Louis and Emma had originally intended to reserve part of their property for a cemetery, and went so far as to have their intention notarized on June 5, 1890. Unfortunately, they did not follow through with the formality of having the property set aside for dedicated use as a cemetery. The residential area of Mukilteo grew up around the property at 513 Webster Street; by 1919 the cemetery was no longer in use.

“During the Depression this lovely spot was spoiled,” wrote Alice Pallas Brooks, one of the town’s early teachers, in her memoir “Memorial Day Memories.” “Fences were all removed and the markers knocked down. Some were broken and some are lost. My father with the aid of a friend



Mukilteo Pioneer Cemetery

mended and remounted them. Mr. Frost's marker was broken into two pieces... As a result of this devastation several grave sites are completely lost.” The true number of burials is unknown. The cemetery offers spectacular views of Possession Sound and Whidbey Island, from the top of an embankment high above the Burlington Northern tracks. Rumor has it that the embankment has slumped, maybe more than once, possibly bringing some remains down with it.

By 1964, the Pioneer Cemetery

was over 90 years old and in a neglected condition. Mayor Ronald Kane in the spring of 1965 called for all the volunteer help he could get to cut the brambles and weeds, to get down to ground level and see what remained to be preserved. No legal action was taken until 1979, when the grave marker of Nathaniel B. Fowler turned up as a prank on the doorstep of a real estate office on the Bothell-Everett Highway. About that time, the Mukilteo Historical Society paid for a title (cont'd on page 5)

*John Petroff*

## Message from our President

### Grand Opening of Lighthouse Park Phase 2

The Historical Society's banishment from the Lighthouse for Phase 2 park construction has come to an end. With a magnificent summer day and our usual stunning water setting, the City of Mukilteo and others delivered a wonderful Grand Opening for Lighthouse Park Phase 2.



Mayor Joe Marine announcing the opening of Lighthouse Park, Phase 2

The City closed off Front Street and set up a ribbon cutting ceremony at the front gate. Immediately we noticed the many changes. Heather McCartney and Mayor Joe Marine took visitors around the new circle. It is ecologically designed to allow water penetration and strategically designed to serve as a turnaround for vehicles. We'll no longer lose portions of our picket fence to the multi-point turnaround maneuvers of large trucks.

The circle also serves as a focal point and will have its own art at the center. James Madison, an artist and Tulalip Tribal member, discussed the importance of salmon and orcas to the traditional sustainability of the tribe. Both are featured in the pavement around the circle and both

will be featured as a centerpiece when the final artwork is completed.



Pavement design

Orcas are the official symbol of the tribe and are traditional hunting partners for salmon. James discussed how the orcas actually scare salmon into tribal nets.

There's a winding path through the middle of the circle that links people to both the Lighthouse grounds and the remainder of the park. Mayor Marine pointed out that much of the path is made of rubber sidewalk. We have some new rubber sidewalks on our grounds too. The rubber is very springy and much easier on the legs and joints than firm concrete.



Inge and Gene Greeninger using new ramp to enter the lighthouse.

Our old sidewalks are still intact and

have been enhanced with pavers. These preserve the historicity of our original sidewalks while widening them for wheelchair access. A ramp was also installed at the Lighthouse entrance for wheelchair access. Gene and Inge Greeninger, historical society members and volunteers, were the first to use the new ramp. Inge pushed Gene into the Lighthouse shortly after opening. Inge also mentioned how good it is to be open again and "back in business".

The program put on by the City was extensive and stimulating. The mayor discussed the many changes, thanked all those who made the Park happen, and turned the program over to Colonel Ray Coffey of the Puget Sound Joint Service Color Guard. They ceremonially raised all 3 flags for us. Christopher Summitt pointed out that Colonel Coffey's Reserve Unit is a direct ancestor of Washington Territory's original Territorial Guard. When combined with the Coast Guard representatives in their ranks, we had a very strong historical connection to both the Lighthouse's past and the past of Washington State itself.



Colonel Coffey presenting the colors

(cont'd on page 3)



(President's message cont'd from page 2)

The mayor then led a group in ribbon cutting. He assembled Council members, contributors to the Park, me, representing the Historical Society, and then snipped the ribbon and pronounced the Park open! Before I could even say "let me open the lighthouse" I saw the Lighthouse opened and people flowing in. Like Inge said, we are back in business!



Emily Van Vanderwielen and Randy Lord cutting ribbon.

We do have many opportunities to volunteer. We have two months of Lighthouse duty and Gift Shop duty remaining in our year. We also have need of a slew of Officers and Directors. Several of us will be stepping down as we've completed years of service. John Krog's sad and sudden passing has created a need for an editor for our newsletter. We are grateful to Nancy Joao who, in the midst of grieving the loss of her brother, has completed this newsletter. The work our volunteers do never ceases to amaze me.

For our new park, thanks to the City

of Mukilteo, the Washington Department of Archeology and Historic Preservation (DAHP), and a special thanks to the many of you who contributed your time and energy. All City participation and DAHP participation was performed by salaried employees. All Historical Society participation was volunteered public service. A special thanks to you for a wonderful day and a wonderful park that will influence our area for generations.

John Petroff ♦



### MHS Schedule

- Thursday, August 12<sup>th</sup>, 7pm, MHS Membership meeting. "Memories of Mukilteo" Jo-An Chandler Cannon, 2010 Pioneer of the Year.
- Sunday, August 22<sup>nd</sup>, 1855 Treaty Remembrance.
- Friday through Sunday, September 10<sup>th</sup> – 12<sup>th</sup>, Mukilteo Lighthouse Festival.
- Saturday, September 11<sup>th</sup>, 3pm – Pioneer of the Year and Citizen of the Year ceremony, Light Station grounds.
- Sunday, September 26<sup>th</sup>, 5:30pm – End of Season Potluck. More information to come. ♦

### Thanks for all your work

Thanks to everyone who worked so hard to get the Light Station back in order and ready for our ever important re-opening day! WOW! It was amazing.

The Lighthouse was cleaned and most things were back in place. The move from Rosehill back to Qtrs. B went off without a hitch. The Gift Shop was set and ready. Chris Wilson & Char Keane, with help from Becky Owensby, worked long and hard to get this done. Then Chris discovered there was no dial tone on the phone. It seems a cable was cut during construction. Chris has made several calls, and all was fixed by opening day. A Big Thanks to Chris!!

Our LH keeper has a new hat that fits, along with something else new. Check it out. New curtains have been hung in the back exhibit room and a new bulletin board in the hallway. The Maritime Exhibit was cleaned, set and ready to go. So was the Interpretive Center.



Ann Collier and Art Losvar in the Maritime Exhibit

All this made for a GREAT Grand Opening!! ♦

### In Memory of John Krog

This edition of the MHS Newsline is in memory of John Krog, its editor. John passed away at his home in Everett on July 2<sup>nd</sup>. A memorial will be held at the Light Station on Saturday, August 28, 2010, at 10:30am. ♦

### Mayor Opens Time Capsule Found at Light Station

The May membership meeting of MHS featured high drama when Mukilteo Mayor Joe Marine opened a dusty, gray jar discovered by construction workers behind the old shed on the lighthouse grounds.



Mayor Joe Marine opening the time capsule

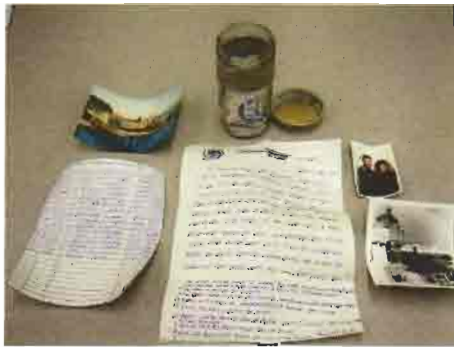
Most of the drama, however, arose from the effort to pry open the container without damaging its mysterious contents. As the Mayor, Steve Odoi, and others tried to twist off the lid, members of the audience held their breath, craned their necks, and began to outdo each other in offering creative suggestions. The guest speaker for the evening, Ed Morrow, fished out his trusty pocket knife and even the janitor (and his vise) was recruited to assist in the increasingly exciting effort.

Although not as dramatic as opening the jar, the jar's contents were still

very interesting. The note inside the Lighthouse salad dressing jar, preserved in silica gel and dated November 19, 1988, tells it all:

*"To who ever finds this treasure. I am Kurtis C. Betz caretaker of Mukilteo lighthouse. This is one of the capsules I have hidden on the grounds under one of the projects that I did. I have put a list of the head caretakers throughout the years, a photo of my wife Michelle and I and some others 'of the light' since I have been here. Please do not just discard this if you do not keep it for show. Give it to the Historical people or groups around. Listed below are a few predictions of the future. Let's see how many come true!*

1. The light will be given up within ten years as upkeep will be too expensive. But the light will be open as a bed and breakfast resort.
  2. The Navy will come to Everett.
  3. The Tank Farm will not be sold to Mukilteo but will be kept for the Navy.
  4. Seattle will reach the Canadian border before year 2000.
  5. A cure for AIDS will not be found.
  6. People will be able to stay in a space station orbiting around the earth before 2010 year.
  7. I will still be alive when this is found.
- Well, got to go give tours. See you in the future. Signed, Kurtis C. Betz"*



Contents of the time capsule

What interesting predictions! In case you are wondering, yes, Mr. Betz is still alive. Among the photos is one

showing Santa Claus on the tower balcony, taken in December 1986. Another was a color photo of the light station taken from the ferry Kittitas in July 1988.

Did Kurtis hide other time capsules? When and where will they be found? Come to the next meeting of MHS - you never know what might happen! ♦

### 5<sup>th</sup> Annual Run/Walk for the Light

Washington Lightkeepers Association will be hosting their annual Fun Run in the beautiful coastal town of Westport, Washington.

Saturday, August 14<sup>th</sup>.

8:30am - Day of Race Registration

10am - Race start time

Registration per person is \$20.



2009 Run 4 the Light

The race starts and ends at the historical Westport Maritime Museum. Race participants travel the paved Westport Dune Trail through Westhaven State Park and pass Grays Harbor Lighthouse. Washington's tallest lighthouse will be open for tours after the race.

Mark your calendars for the annual event and celebrate our state's lighthouse heritage.

For more information or to register for this fun run check out their website: [www.run4thelight.com](http://www.run4thelight.com). ♦

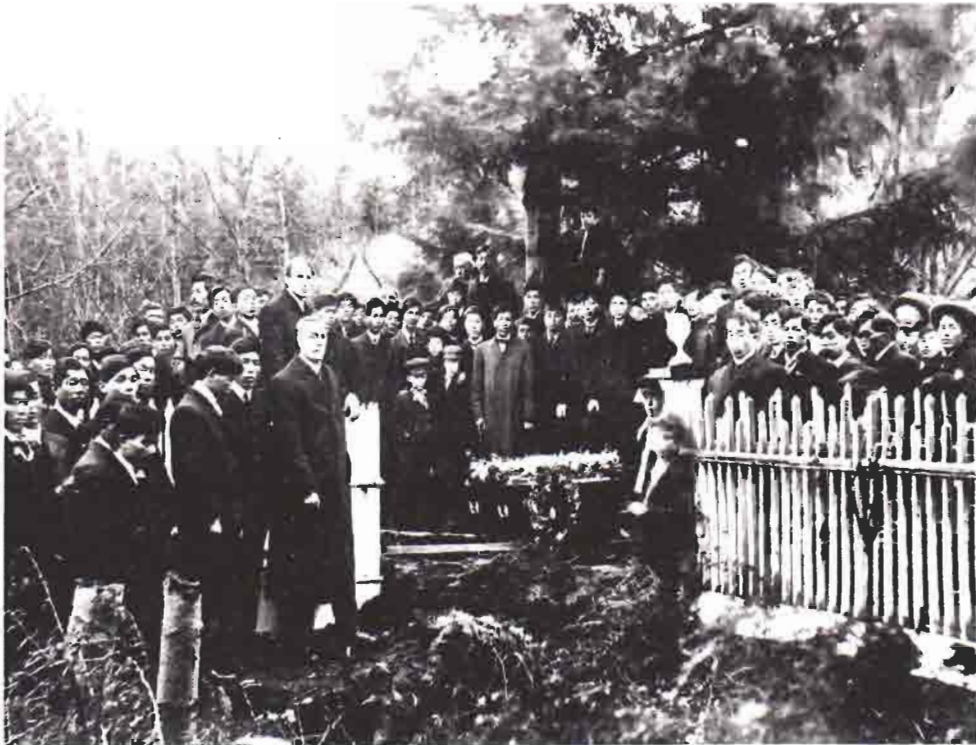


(Mukilteo Pioneer Cemetery cont'd from page 1)

search and discovered that property around the edges of the cemetery had been sold, and that legally the cemetery could conceivably be placed on the tax rolls. In 1982 the remedial legal process was completed after which the cemetery officially belonged to the city.

did find missing links of her research in one such document.”

Following the 1965 clearing, a list of 25 names was typed. Since then more markers have been added to bring the number of marked graves to 43 (see the survey made in 1999 by Kevin Fraley online at [files.usgwarchives.org/wa/snohomish/cemeteries/mukpio.txt](http://files.usgwarchives.org/wa/snohomish/cemeteries/mukpio.txt)). The



Japanese Funeral at Pioneer Cemetery 1909

After the legal work was done, the Historical Society tried to determine just who was buried there. Volunteers paced north to south, east to west, and diagrammed the locations of grave markers and trees. A map was produced from their labors. On the title page of the map, Valerie Norwine wrote as a dedication that she did this work “in hopes that this will aid some future genealogist or historian...made possible only from the prodding of my crazy genealogist mother who

original source for names of those buried here appears to be a handwritten list made by Louisa Fowler Sinclair, daughter of Jacob Fowler, and niece of Nathaniel Fowler. Louisa, who died in 1955, drew up the list from memory at an unknown date.

Much work remains to be done into the histories and genealogies of those buried here. Mas Odoi of the Historical Society has translated the markers of the three Japanese—Goro Wadatani, Tokumatsu Shirai, and Rikimatsu

Okamura--employees of Crown Lumber, thereby revealing their death dates and their homes in Japan. Similar work needs to be done for many of the others.

Most of the burials are of people who came from afar to Mukilteo. Finding information about them has been and continues to be a challenge. ♦

**Help MHS gardeners keep our Lighthouse grounds looking GRAND!**



ADOPT A FLOWER BED

A new opportunity to volunteer at YOUR convenience!

The Mukilteo Historical Society gardeners have 23 flowerbeds to plant and maintain, so we are asking for volunteers to step forward and help us out. Weeding, deadheading and an occasional watering may be required. The flowerbeds are not large; a time commitment of one hour or so every two weeks would be sufficient. No planting would be required.

Anyone or any family that fulfills this commitment would receive free membership for 2011 and the most sincere gratitude from the MHS gardeners.

Please grab a friend, your kids or your I-pod and sign up today. A call to Char Keane, 425.355.9499, will start the process. Char will help you choose the right flowerbed for you and give you some pointers.

Please Call Today! ♦

### New Newsletter Feature - Spotlight on a Volunteer

Any all-volunteer organization such as MHS cannot thrive and prosper without the generosity of both time and support of its members. In this newsletter we will Spotlight a Volunteer, with an Up Close & Personal article about a particular member.

This person has not been chosen by a committee or by popular vote. You can participate anytime by submitting your article about a volunteer you would like to see spotlighted in an upcoming newsletter. ♦



### Spotlight on a Volunteer: Up Close & Personal with Char Keane

I first met Char Keane at an MHS general meeting way back when. She said "I'm joining the society but...I only want to garden!" Then she stood back up, like she often does, and said "Well, what I mean to say is, I want my main focus to be on the gardens."

And what a FOCUS that has been! Along with other gardeners, Char has been the force behind the

Mukilteo Light Station grounds being admired and enjoyed by townspeople and visitors alike.

Char and Tom, her husband, have been regulars in the Gift Shop and Lighthouse tower as devoted volunteers on the 2nd Sunday of the month for a number of years.

Char pitched in to help (a lot, we might add) in getting the whole light station ready for the grand re-opening and our short season. She worked in the many flower beds, cleaned the lighthouse, washed windows, helped pack up Rosehill, organized the storage in the basement and got the Gift Shop ready.

MHS would not be the same without Char Keane as a member, one of many hard working, cherished, dependable, dedicated, fun loving volunteers we are fortunate to have.

THANKS Char! ♦



### MHS volunteer opportunities exist in the following areas

- Light Station Gardeners (see "Adopt a Flower Bed" article page 5) – contact Char Keane, 425.355.9499

- Officers and Directors for 2011 – The nominating committee will be looking for volunteers to step forward for 2011 soon. Contact a current officer or director for a description of the responsibilities of each position.

- MHS Treasurer – we would like to move this position back among our volunteers. Contact Nancy Joao, 425.334.8914

- "MHS NEWSLINE" Editor – contact Nancy Joao, 425.334.8914

- Weekend Volunteers for the gift shop and tower for the balance of our short season. Contact John Petroff, 425.355.1264

- Volunteers to help with Weddings and Special Tours. Contact Karen Carpenter, 425.347-2719 ♦

**MHS Happenings...**

Did you know...

The MHS Trunk Treasures trunk was used at Fairmount Elementary and Columbia Elementary schools this Spring, and Christopher Summitt provided his presentation on Mukilteo history to four classes at Columbia Elementary.

Ellen Koch and Becky Owensby distributed 440 Lighthouse DVDs to schools in the Mukilteo, Everett, and Edmonds School Districts for library and classroom use.

An interpretive sign on the historical Japanese Gulch Community has been installed at the beginning of the Japanese Gulch trail on Mukilteo Lane. This is the first of a number of historical interpretive signs to be installed by the city in a cooperative effort with MHS.

Pioneer Cemetery cleanup occurred on May 22, with Ellen Koch, Nancy Joao, Herb Pridmore, Rick Rigby, Ann Collier, Ruth Nelson, Becky and Mitch Owensby, Robert Smith, Steve Odoi and his girlfriend Elizabeth working to clean the headstones and place the flags and crosses.

Brochures about the Mukilteo Japanese Memorial were updated and reprinted, and are now available for distribution.

Bev Schreiber has designed a new bookmark for the Mukilteo light station - it even shows the original windmill. A number of the bookmarks were purchased by the City and were given to those attending the official opening of Phase 2 of Lighthouse Park on Saturday, July 24. Bookmarks are also available for sale in the Gift Shop.

Under the leadership of Diane Tinsley, two major events have taken place to

commemorate the Sesquicentennial of the founding of Mukilteo: the Remembrance at Pioneer Cemetery on May 30 and the celebration on June 6 at the Mukilteo Japanese Memorial. Both were very well attended and elicited many favorable comments. ♦

**Mukilteo Historical Society  
Programs and Guest Speakers**

**2010**

**August 12<sup>th</sup>**- "Memories of Mukilteo" Jo-An Chandler Cannon, Pioneer of the Year for 2010, will share her early experiences as the daughter of Mukilteo's only doctor, Claude Chandler.

**September 9<sup>th</sup>**- Valerie Steel, President of Historic Everett, will tell us about a feasibility study exploring whether part of the Washington coast should be designated as a National Heritage Area.

**October 14<sup>th</sup>** - "Lighthouses 101" Bev Schreiber, local lighthouse artist, will share information about the different construction types of lighthouses.

**November 11<sup>th</sup>**- John Petroff, MHS President, will talk about volunteer hours and present recognition. Nancy Joao, Chairman of the MHS Directors, will give the highlights of this past year and set the course for next year.

**December 5<sup>th</sup>**- Eileen Pridmore, Ellen Koch and Nancy Joao, your Christmas Party committee, have set the date. More information to be provided at a later date.

Membership meetings are held the second Thursday of each month, except December, starting at 7 PM at the Roschill Community Center, Art Room, Lower Level.

**EVERYONE IS WELCOME ♦**



**Mukilteo Historical Society Inc.**  
304 Lincoln Avenue, Suite 101  
Mukilteo, WA 98275

**2010**

**Directors**

*Bev Schreiber  
Eileen Pridmore  
Christopher Summitt  
Ellen Koch  
Nancy Joao*

**Officers**

**President**

*John Petroff*

**1<sup>st</sup> Vice President**

*Richard Rigby*

**2<sup>nd</sup> Vice President**

*Sheila McGillivray*

**Secretary**

*Becky Owensby*

**Gift Shop**

*Voice mail (425) 513-9602*

*MHS fax (425) 355-8662*

**Weddings**

*Mim Loree*

**Special Tours**

*Karen Carpenter*

**Membership**

*Eileen Pridmore*

**Newsletter**

*John Krog - Editor Emeritus*

**MHS Website**

**[www.mukilteohistorical.org](http://www.mukilteohistorical.org)**