



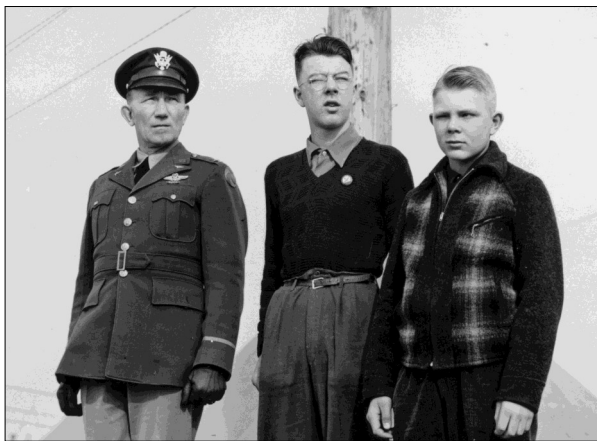
Mukilteo's WWII Hero: a 14-year-old Boy

By John and Ann Collier

Many stories are told of valor and courage during World War II, but did you know that Mukilteo has just such a story that happened right here at Naketa Beach? On Sunday, March 23, 1942, Max Whitcomb, Jr. saved the life of a pilot, Robert W. Neel, whose plane crashed into Puget Sound about 600 yards off the shore.

Young Max saw the plane go down into the roiling waters on that stormy day, and without hesitation he and his younger brother, Paul, carried their 12-foot rowboat to the shore so that Max could row out into the teeth of the storm. He managed to pull the pilot into the boat in spite of Neel's injuries, his heavy clothes, and the crashing waves. Neel, on a training flight out of Paine Field, had reported his distress by radio, so by the time Max rowed back to shore, military personnel were already there to provide first aid.

Max Whitcomb put Mukilteo on the map that week. Following interviews on KOMO and KIRO radio programs, he was the guest of honor at a full military review at Paine Field. He was allowed to bring one guest with him, and Max chose his younger brother to stand beside him on the reviewing stand with the commanding officer of the base, Col. A.C. Strickland.



Max Whitcomb (center) reviews the troops with Col A. C. Strickland and Max's younger brother, Paul Whitcomb.

When Col. Eddie Rickenbacker came to Paine Field the next day, a meeting was arranged between Max and the legendary World War I pilot. According to one account, Col. Strickland presented Max with the following words: *"I want an old hero to meet a new hero."*



Col. Eddie Rickenbacker visits Paine Field.

A newspaper article described the review: *"While Max and his brother stood with Colonel A. C. Strickland, commanding officer of the base, on the reviewing stand the soldiers paraded by, turned and marched back again. Behind them, while contingents of soldiers stood by, rolled the trucks of the base. And all the while the army band was filling the air with martial music. The honor accorded the Whitcomb boys is one usually reserved for visiting generals..."*

In an official letter to Max, Col. Strickland wrote: *"Young men like you are the soul of our country. When we realize that behind our armed forces there are youngsters like yourself who are ready to face odds in order to do your part we know that we need have no fear for the future."*



Soldiers parade past Col. Strickland and the Whitcomb boys.

A Message from our President

In my third year as President, I finally understand the rhythm of the seasons. It's a lot of work to prepare for opening day and to plan the events that occur early in the season. The energy is high, it's fun, and then there is a bit of a lull until the September Lighthouse Festival. Because the festival is a lot of work for our volunteers, the lull feels like a reward.

The lighthouse was cleaned, thanks to the leadership of Mitch and Becky Owensby. Gift shop items were priced and stocked by Sue Anderson and her team. Al Friedrich updated our training materials based on his participation in an interpretive course. Becky finalized the volunteer schedule for the season, which is never easy.

What is striking each year is the exceptional teamwork of our organization. So much is getting accomplished. Our volunteers identify issues and then work together to implement solutions. I delight in arriving at the lighthouse when several activities are happening at the same time. This spring, there was the bustle of activity preparing for opening day with the added activities of the new exhibit committee led by Craig Fisher. The committee developed and installed an exhibit on Rosehill School at the library for the month of April. Some items then went into the Interpretive Center as part of a domestic exhibit.

As you may know, the Interpretive Center was refreshed last year with new paint and shutters. Peter Anderson ordered benches, a mirror, and a clothes rack to assist wedding parties. Becky and Mitch Owensby purchased a new TV to show our video. Mark Sutherland refurbished the existing display case. Sharon Sutherland worked on finishing touches and the exhibit. The Interpretive Center is a multi-use space that provides an educational opportunity for visitors who cannot access the light tower and others. A snag occurred when an antenna piece came loose, forcing the garage and interpretive center to be closed by the City of Mukilteo and the Coast Guard. The temporary closure was disappointing—thankfully, it's now open again.

In April, Lighthouse Environmental Programs (LEP) approved a grant request of \$10,000 to partially fund a new roof and associated repairs for the lighthouse. The City of Mukilteo is now looking at roofing material options and additional funding to either repair or replace the roof in 2020.

Community outreach continues to grow with presentations to a neighborhood group and the South Snohomish County Rotary. Our membership has grown to 150 members with new members joining each month. Banners are regularly placed throughout the city and "Muk Revisited" articles are published monthly in the *Beacon*. Alex Bonner and Pat Clark established the program which we now maintain.

I recently returned from vacation and was grateful to see that so much happened while I was gone. Margaret Summitt led a well-attended Memorial Day ceremony. Sally Morrison led the successful annual planting day. The City of Mukilteo painted the exterior of the Interpretive Center and garage. Peter Anderson transferred the duties of Membership Chair to Tina Saunders. Thank you to Tina for taking on this role and to Peter for filling in for several years after our membership chair moved away.

Here's to an exciting season of sharing the Light Station with our local and international communities!

Joanne Mulloy, President ♦



The Tale of the Triangle

In late March, just before opening day, the historical triangle at the Light Station broke off its stand and a piece was missing.

Mitch Owensby took the triangle to Cook Welding Services in Everett to see if they could help. Their sign indicated a minimum charge of \$50. Cook Welding was able to repair the triangle while Mitch waited—at no charge! Mitch was able to reinstall the repaired triangle at the Light Station in time for Opening Day.

A big THANK YOU to Mitch Owensby and Cook Welding Services! ♦



In Memoriam

Mukilteo recently lost a long-time resident and valued member of the Mukilteo Historical Society. Thelma Weers Kane, born in Mukilteo in 1923 to William and Elzina Weers, died on May 9, 2019.

Thelma was part of the MHS A-team, working in Quarters A to help identify photos and artifacts in the MHS collection. Her enthusiasm for celebrating Mukilteo history was remarkable, and she contributed many items to MHS displays and exhibits.

Thelma was married to Ronald Kane, who served as Mukilteo's mayor 1964-1969. Ron and Thelma were Pioneers of the Year in 1997.

The Mukilteo Historical Society extends condolences to all of Thelma's family and friends. ♦

Continued from page 1...

Max's family got a chuckle when his mother wrote in a letter to her mother about the event: *"Before Max brought him in two of the Military Police had arrived and they carried him in our house and administered first aid until the doctor and his attendant arrived. What a disappointment it was to me who had recently received my First Aid Certificate not to be able to "strut my stuff," as Max puts it."* Her letter goes on to say, *"He is taking his glory fairly well and we will most certainly do all in our power to see that it doesn't go to his head...But I must admit the boy deserves much praise."* ♦

Historical Display at Mukilteo Library



Rosehill historical display at Mukilteo library.

The Mukilteo library recently hosted a historical display featuring Mukilteo's Rosehill School. The display focused on the history of the original Rose Hill School, 1893-1928, and the replacement Rosehill, 1928-1973. The goal was to showcase our Mukilteo Historical Society and encourage the community to join and volunteer.

Kris Hoffman and Marianne Anderson designed the display with the help of Craig Fisher. His eye for enhancing the original photos, pulling out the unique details of each, really enhanced the exhibit. Artifacts were chosen from the Historical Society's archives. The items were on display at the library in April. Many of the pictures are now on display in the Light Station Interpretive Center, joining Sharon Sutherland's domestic display, for all Lighthouse visitors to see. ♦

Treasurer's Final Report

January 1, 2018 through December 31, 2018

2018 Final Financial Statements for the Mukilteo Historical Society (MHS) represent January 1, 2018 thru December 31, 2018.

The 2018 Statement of Financial Position (Balance Sheet) included:

- Current Assets totaling \$108,413.15.
 - Cash at Bank of America and Opus Bank totaling \$93,548.59.
 - Gift Shop Inventory as of December 31, 2018 totaling \$14,778.58.
 - Assets in suspense until 2019 totaling \$85.98.

- Current Liabilities (Sales Tax Payable) totaling \$83.95.

Reducing Current Assets by Current Liabilities left Net Assets totaling \$108,329.20.

The 2018 Statement of Activities (Income Statement) included:

- Operating Revenues totaling \$50,245.82.
 - Gift Shop Sales totaling \$34,081.00 which was offset by the cost of the merchandise, \$19,997.88.
 - Donations totaling \$6,608.60.
- Operating Expenses totaling \$26,902.15.

Reducing Revenue by Expenses resulted in a Net Income of \$2,690.35.

The 2018 Financial Statements also included a New Furniture and Fixture expense totaling \$1,961.34 to upgrade the Interpretive Center. The expense was offset by the use of Prior Year Reserves.

The amount of Current Assets versus Current Liabilities left MHS in an excellent economic position at year-end 2018.

Al Friedrich, Treasurer ♦



Cemetery Corner

By Margaret Summitt

The mysterious Beatrice DeRosier (1862-1914) doubtless kept a low profile in Mukilteo, but by her association as housekeeper for Eli Rousseau, everyone in town must have known that she was a woman with a past. I believe that Beatrice DeRosier was an alias that Mr. Rousseau gave her (he was fond of aliases and often used them himself) at the time that they “retired” to Mukilteo from Everett after the Windmill House, of which he was the landlord and she the madam, finally burned down in 1909.

I also believe that the Beatrice DeRosier of the 1910 U. S. Census is the same person as the Rosa Kennedy of the 1900 U. S. Census, listed as the “landlady” of the establishment in Everett. Both women were born in October 1862 in French Canada, and both emigrated to the U. S. in 1888. From here back the trail is lost due to a lack of records, not to mention her desire to keep a low profile. Mr. Rousseau, a French Canadian by birth, had been in the U.S. longer than she had, and came to Seattle in the early 1890s, apparently after a stay in Butte, Montana. He may have been briefly married and divorced in Seattle. I believe that he and Rosa Kennedy likely met in the west.

The 1890 Census was burnt up, however, and there are just so many Rousseaus, Rosiers, DeRosiers, and Kennedys in the records that it’s a tedious job to tell them apart. I found a Rosa Kennedy in an Irish family in Montreal in a Canadian census, and she fits the profile to some extent, but I can’t prove it. Then, too, I have a lingering doubt as to whether Rosa Kennedy was an alias too. I think Mr. Rousseau, who cultivated roses in his garden, must have appreciated the humor, as “DeRosier” means rose tree in French. There is a slender rose bush by her grave, which is the only one in the cemetery that is marked with a cross. ♦



On Call Help — We need help when the scheduled volunteer is unable to make it. Shifts are 11:30 am to 5:30 pm on Saturday or Sunday. Contact Becky Owensby at rowen55@comcast.net.

Special tours — Share your knowledge of our Light Station and its history with students, seniors, or other interested groups. Tours are often on weekdays. Contact Kris Hoffman at fed66@live.com or Marianne Anderson at mtnmarianne@hotmail.com.

Weddings — We need 3-4 volunteers to assist with each wedding, which lasts about two hours. Weddings are scheduled outside of our regular Light Station hours, often on weekend mornings or evenings. Contact Sharon Sutherland at sharondietz913@gmail.com. ♦

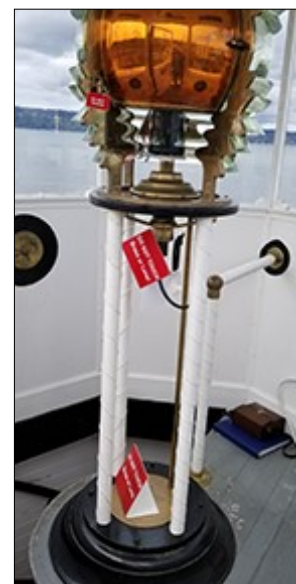
Protecting the Brass

Wrapping the brass in the light tower has been considered for some time, to protect it from deterioration. The safety of visitors and the lens is enough to focus on, in addition to policing the brass. People with experience were contacted to no avail.

Joanne Mulloy and Lynette Stefansson talked to a volunteer at the Center for Wooden Boats at Cama Beach about contracting to wrap the brass. He offered to do the work in the off season and showed a wrapped oar as an example of his work. When Joanne called earlier this year to schedule the work, he was no longer working there.

However, Michael Kyte, a retired marine biologist who volunteers at the Cama Beach center, was available. When Joanne met with Michael at the lighthouse, Michael brought the oar as an example of his work. So it wasn’t the original volunteer who had wrapped it! The Board agreed to contract with Michael to wrap all the brass posts, which involved many visits to the Light Station. Thanks to Jamieson from the City of Mukilteo for providing access!

This project took about two weeks, including time for Michael to rest his hands. The rope material is polyester, so it is expected to last for years with annual soap and water washings. Volunteer and visitor responses have been positive. Thank you, Michael, for your hard work and dedication to completing this project and improving our safety in the lighthouse tower. As a bonus, Michael recently joined our organization!



New polyester rope protects Light Station brass.

July 2019

Sun	Mon	Tue	Wed	Thu	Fri	Sat
	1	2	3	4	5	6 12-5pm LH open
7 12-5pm LH open	8	9	10	11 7 pm-MHS General meeting	12	13 12-5pm LH open
14 12-5pm LH open	15	16	17	18	19	20 12-5pm LH open
21 12-5pm LH open	22	23	24	25 6:30 pm- MHS Board meeting	26	27 12-5pm LH open
28 12-5pm LH open	29	30	31			

August 2019

Sun	Mon	Tue	Wed	Thu	Fri	Sat
				1	2	3 12-5pm LH open
4 12-5pm LH open	5	6	7	8 7 pm-MHS General meeting	9	10 12-5pm LH open
11 12-5pm LH open	12	13	14	15	16	17 12-5pm LH open
18 12-5pm LH open	19	20	21	22	23	24 12-5pm LH open
25 12-5pm LH open	26	27	28	29 6:30 pm- MHS Board meeting	30	31 12-5pm LH open



MUKILTEO HISTORICAL SOCIETY

Keepers of the Mukilteo Light Station

MEMBERSHIP APPLICATION

Please review the membership categories below carefully. As a member you will receive a membership card, quarterly newsletter and a 10% discount in the gift shop. Your donation is tax deductible.

Membership runs from January 1st to December 31st. Return this form and your payment to:

Mukilteo Historical Society – 304 Lincoln Avenue, Suite 101 – Mukilteo, WA 98275

MEMBERSHIP TYPE:

- ☐ INDIVIDUAL - \$15
 ☐ SENIOR (65 OR OVER) - \$10
 ☐ SENIOR COUPLE - \$20
 ☐ FAMILY - \$25
☐ CORPORATE - \$50
 ☐ SUSTAINING - \$100
 ☐ BENEFACTOR - \$300
 ☐ LIFE - \$500
☐ DONATION ONLY – Please provide your name and address so we may acknowledge your donation

APPLICANT #1 DATA*:

Name: _____

Mailing Address: _____ City _____ State _____ Zip Code: _____

Phone: _____ e-mail _____

☐ Help us GO GREEN! Check this box to opt-in for paperless-only newsletters

APPLICANT #2 DATA*:

Name: _____

Mailing Address: _____ City _____ State _____ Zip Code: _____

Phone: _____ e-mail _____

☐ Help us GO GREEN! Check this box to opt-in for paperless-only newsletters.

Applicant*

Please check the volunteer opportunities each applicant would like to help with:	#1	#2
Archives/Trunk Treasures – Collect & archive all documents, photos, and artifacts relating to the history of Mukilteo. Organize exhibits. Present Trunk tales throughout the community.		
Garden – Join our group of gardeners or adopt a specific garden bed at the light station.		
Gift Shop – Help to price, stock, and maintain inventory. Operate credit card processing terminal and cash register.		
Lighthouse – Become a lighthouse tour guide.		
Maintenance – Liaison to Board about Light Station/Pioneer Cemetery issues and plans.		
Publicity – Advertising (Beacon/Herald/etc.). MHS Newsletter, Membership mailing (Sunshine)/emails/phoning.		
Special Tours – Assist with docent tours, field trips, and visiting groups.		
Technology – Website, internet, social media.		
Weddings – Welcome guests & provide tours for wedding guests.		

**Please use a second application form for more than two applicants in family memberships.*

For office use only: Date Received _____ ☐ Added to Membership Roster ☐ Membership Card Sent

Gift Shop News

Welcome to the 2019 season. Two gift shop buyers attended the Seattle Gift Show in Seattle in early February. There was too much to see in too little time!



New items include a pillow, kitchen items, beach glass with shells, and soaps.

A few of the new items are shown here. New items include a nautical-themed pillow, wooden salad tongs, kitchen towels wrapped around nautical designed wooden spoons, packets of sea glass with shells, and fragrant soaps made by a Mukilteo vendor.

Our selection of small marble figures includes new turtle styles, along with eagles, sea otters, and more. Embroidered kitchen towels, designed by a local artisan, are available in a selection of colored stripes to match your kitchen.

We have a new long-sleeved tee shirt that features a compass design with the Mukilteo Lighthouse in the center. Come in and check out our new, larger selection of wind chimes in both brass and driftwood.

For fans of the Bev and Jody designs, we have new travel mugs and note cards. Back in stock are Jody's "Light the Way" mugs that sold out last year. Look for the matching coasters in both the Bev and Jody designs. The coasters can also be used as a cover when steeping tea or for keeping your coffee warm.

A grateful thank you to all the wonderful volunteers who have helped this year during the transition of buyers. Your dedication to MHS and the gift shop is heartwarming.

Please stop by the gift shop to say hello to our volunteers and check out the new merchandise!

Sue Anderson ♦

Many Thanks

Thanks to the following folks who cleaned up Pioneer Cemetery in preparation for the Memorial Day ceremony.



Cemetery cleaning crew (L to R): Eric Richstad, Judy Richstad, Sally Morrison, Ellen Judd, Brian Judd.

♦

Membership Corner

We joyously welcome the following new members who joined MHS for 2019.

- Rowan Ashe
- Ann and Gary Bastin
- Dan Germano & Family
- Sharon and Kevin Holst
- Michael Kyte
- Ben Pulloud & Family
- Mary Stafford
- Heritage Bank

We currently have 150 active members. A membership application is included with this newsletter for anyone wishing to join or renew their membership. We look forward to another great year of fun activities in 2019!

♦



Mukilteo Historical Society Inc.
304 Lincoln Avenue, Suite 101
Mukilteo, WA 98275

2019 Directors

Peter Anderson
Eric Richstad
Craig Fisher
Mark Sutherland
Sharon Sutherland

Officers

President

Joanne Mulloy

Vice President

Sally Morrison

Secretary

Margaret Summitt

Treasurer

Al Friedrich

Advisory Board

Ann Collier
John Collier
Becky Owensby
Mitch Owensby
Lisa Romo-Bremerthon

Gift Shop

Sue Anderson

Weddings

Sharon Sutherland

Special Tours

Kris Hoffman
Marianne Anderson

Membership

Tina Saunders

Newsletter

Mary Dulin – Editor

MHS Website

www.mukilteohistorical.org

Phone

Voice mail (425) 513-9602



2019 SPONSOR HONOR ROLL

The Mukilteo Historical Society (Keepers of the Mukilteo Light Station) thanks the following corporate sponsors who help support its mission to preserve and exhibit items of historic value that pertain to the City of Mukilteo and its environs.

BENEFACTORS*

Heritage Bank

SUSTAINING SPONSORS*

University Mechanical Contractors

BASIC SPONSORS*

Robin Boyer

Sno-Isle Libraries - Mukilteo Library

*Basic Sponsors make an annual contribution of at least \$50; Sustaining Sponsors \$100; Benefactors \$300.

Mukilteo Historical Society
304 Lincoln Avenue, Suite 101
Mukilteo, WA 98275
